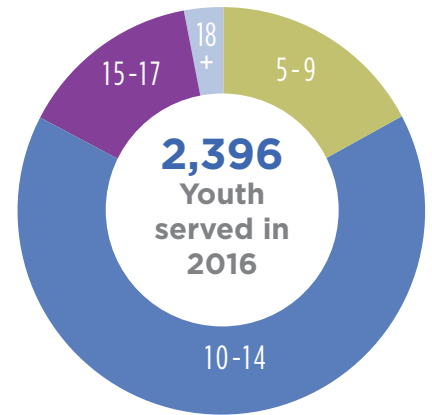
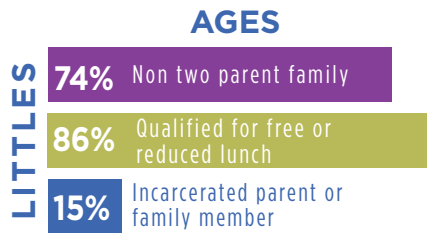
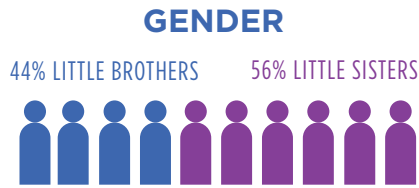
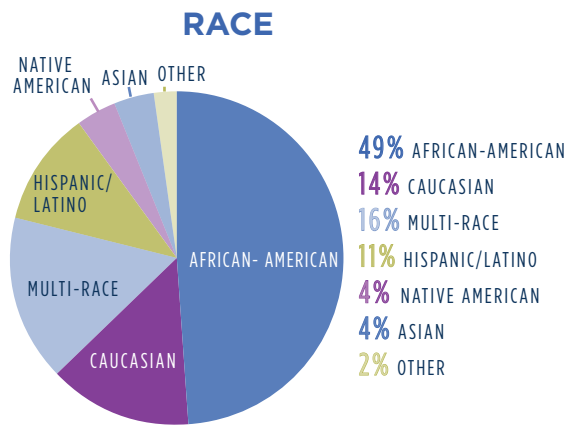




# IN 2016 WE SERVED



# OUR IMPACT

## LITTLES

- 91%** improved or maintained their scholastic competence
- 79%** have higher educational expectations
- 91%** are less likely to engage in risky behavior
- 73%** improved or maintained grades in school



## AVERAGE MATCH DURATION

NATIONAL:  
**29 Months**

BBBS of the Greater Twin Cities:  
**34 Months**

Longer matches = stronger relationships = more positive outcomes



**TOP 10%** BBBS agencies in the nation  
**TOP 3** most effective organizations in Minnesota serving at-risk youth by Minnesota Philanthropy Partners (2013)

# PROGRAMS



- 1554** Youth served in this program  
**Community-based Mentoring**  
One child. One adult. One life-changing relationship. Community-based mentoring represents the classic Big Brothers Big Sisters relationship.
- 590** Youth served in this program  
**School-based Mentoring**  
For some Bigs and Littles, time together doesn't happen in parks or museums or stadiums—it happens in school cafeterias and playgrounds and gymnasiums instead.
- 492** Youth served in this program  
**Education & Enrichment**  
We work with teenage Littles and high school Bigs to turn the positive outcomes of mentoring into a launching point for post-secondary success.